



ZERA

EMOBxxx test case e-mobility

Product catalogue

Doc.No: 100352733
Version from: 01.01.2023

Device



The test case EMOB32 for on-site-testing of AC charging stations

Ord.No.	101468301
---------	-----------

The *EMOB32* is a three-phase, portable and compact test case. It is used for on-site testing load of AC charging stations for electric vehicles of different types. For performing tests with the test case *EMOB32* an additional battery operated reference meter *MT310s2* is required. A mains supply for the test case *EMOB32* is not required while using the battery operated reference meter *MT310s2*.

Main functions:

- Direct measurement up to 32 A (AC)
- Protection class **CAT II**
- Energy measurement during the charging procedure
- No mains supply required
- Software-guided test via separate Notepad or Notebook possible



The test case EMOB200 for on-site-testing of AC and DC charging stations

Ord.No.	101620600
---------	-----------

The *EMOB200* is a portable, compact three-phase test case. It is used for on-site testing load of AC and DC charging stations for electric vehicles of different types. For performing tests with the test case *EMOB200* an additional battery operated reference meter *MT310s2* is required. A mains supply for the test case *EMOB200* is not required while using the battery operated reference meter *MT310s2*.

Main functions:

- Direct measurement up to 32 A (AC)
- Direct measurement up to 200 A (DC)
- Protection class **CAT II**
- Energy measurement during the charging procedure
- No mains supply required
- Software-guided test via separate Notepad or Notebook possible

**Three phase reference meter MT310s2 CAT IV**

Inclusive adjustment for one mains frequency
and one Battery Pack BM4100.

Ord.No.	101622700
---------	-----------

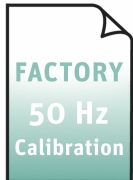
MT310s2 is light weight and compact reference meter for on-site verification and calibration of single or three phase meters.

Test voltage and test current for the Reference Meter will be measured at mains on-site or can be generated and measured via external source (optional).
(e.g. MT400 oder MT5xx)

MT310s2 is designed for testing of max. 1 test specimen.

Configuration:

- Direct current measurement up to 300 V / 12 A
- Protection class **CAT IV**
- Accuracy for power/energy measurement: $< \pm 0.1 \%$
- Burden measurement for instrument transformer installations
- Additional 4th voltage and current input channel
- Wide range of accessories (optional)

Factory Calibration for New Instrument**Factory Calibration for EMOB32, AC 50 Hz**

incl. ZERA calibration report.

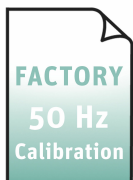
Ord.No.	101242334
---------	-----------

This article applies only for a purchase of new device.

Load points according to ZERA regulations.

Summary of used load points
can be downloaded at www.zera.de.

Additional load points are subject to charges.

**Factory Calibration for EMOB200, AC 50 Hz and DC**

incl. ZERA calibration report.

Ord.No.	101242351
---------	-----------

This article applies only for a purchase of new device.

Load points according to ZERA regulations.

Summary of used load points
can be downloaded at www.zera.de.

Additional load points are subject to charges.

**Factory Calibration for MT3x0s2, 50 Hz**
incl. ZERA calibration report.Ord.No. **101242326**

This article applies only for a purchase of a new device without a DAkkS DKD-Calibration.

Load points according to ZERA regulations.

Summary of used load points
can be downloaded at www.zera.de.

Additional load points are subject to charges.

DAkkS DKD-Calibration for Instrument**DAkkS DKD-Calibration for EMOB32, AC 50 Hz
in combination with MT310s2**

incl. DKD-Calibration Certificate acc. IEC 17025

Ord.No. **101173962****Load points according to ZERA regulations.**

Summary of used load points
can be downloaded at www.zera.de.

Additional load points are subject to charges.

**DAkkS DKD-Calibration for EMOB200 AC 50 Hz and DC
in combination with MT310s2**

incl. DKD-Calibration Certificate acc. IEC 17025

Ord.No. **101173970****Load points according to ZERA regulations.**

Summary of used load points
can be downloaded at www.zera.de.

Additional load points are subject to charges.

**DAkkS DKD-Calibration for MT3x0s2, 50 Hz**
incl. DKD-Calibration Certificate acc. IEC 17025Ord.No. **101173949****Load points according to ZERA regulations.**

Summary of used load points
can be downloaded at www.zera.de.

Additional load points are subject to charges.

Power Cords



Power cord "Plug type A to figure-of-eight", 2.0 m

For supply via mains supply.

- 1x Plug type A
- 1x Figure-of-eight socket (IEC 60320-1 C7)

Ord.No.

100277201



Power cord "Euro plug type C to figure-of-eight", 2.0 m

For supply via mains supply.

- 1x Euro plug type C (CEE 7/16)
- 1x Figure-of-eight socket (IEC 60320-1 C7)

Ord.No.

100067700



Power cord "Plug type G to figure-of-eight", 2.0 m

For supply via mains supply.

- 1x Plug type G (BS1363)
- 1x Figure-of-eight socket (IEC 60320-1 C7)

Ord.No.

100277200



Power cord "Plug type I to figure-of-eight", 2.0 m

For supply via mains supply.

- 1x Plug type I (AS/NZS 3112, 2-pin)
- 1x Figure-of-eight socket (IEC 60320-1 C7)

Ord.No.

100277202

Battery Pack and Accessories



Battery Pack BM4100

Rechargeable Battery Pack with Li-ION Battery for operation of MT3x0s2 independent from the mains.
14,4 V / 6,6 Ah / 95,04 Wh

Ord.No.

101378200

**DC/DC-Converter for Battery Pack BM4100**

Converter for recharging battery pack BM4100 via cigarette lighter plug from cars.

Input: DC 12 -16 V

Output: DC 24 V, max. 6 A

Ord.No.

101486001**AC Power supply for Battery Pack BM4100**

AC Power supply for recharging battery pack BM4100

Input: AC 90 – 264 V / 47 – 63 Hz

Output: DC 24 V, 1,67 A (max. 40 W)

Ord.No.

101213410**Extension for DC cable**

for connection with the battery module
BM4100 of the *MT310s2* Reference Meter

Ord.No.

101488900

Current and Voltage Cables (see also Special Accessories)

**Charging Cable with Plug Type 2 for EMOB32 / EMOB200**

for connection with AC charging station and test case 5 m, cable with sense line,
Plug type 2, max. 32 A, weight approx. 3.2 kg
Optional cable lengths on request.

Ord.No.

101482610

Software

**WinSAM software incl. standard test sequence**

The operator software WinSAM is used for software-guided testing of AC charging stations using an EMOB32 test case.

An external control computer is necessary for this purpose.

Ord.No.

101549400

Impulse Sensor (see also Special Accessories)



TK326-1, scanning head without holding device

For detection of rotor disc markings on Ferraris meters and LED signals on electronic meters.

- Fixing: Via stretchable holding device for scanning heads TK326/TK118.

Ord.No. **101064901**



Holding device for scanning head TK326/ TK118

Stretchable holding device to fix the scanning head TK326 or TK118 at the electricity meter.

- Maximum wingspan: 19.0 cm.

Ord.No. **100319600**



K121, S0 pulse converter with measuring leads

For pulse detection of floating contacts as well as of S0 pulse output on electricity meters. Including two laboratory cables with safety plug/connection pin.

Ord.No. **100004210**



Connection cable for scanning head input (SC) on ZERA instruments with RJ10 socket

The spiral cable connects TKxxx and K121 to the instrument.

- 2x Modular connector RJ10
- Length: 1.00 m / expanded: 6.00 m

Ord.No. **Z10353027**



Microphone stand

for mounting and free positioning of the TK118/TK326 optical pickup.

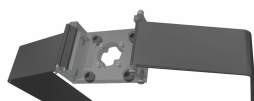
The stand clamp 101558300 is required for this purpose.

Ord.No. **101558200**



Tripod clamp for tripod 101558200
for mounting the TK118/TK326 optical pickup.

Ord.No. **101558300**



Tensionable probe holder with Velcro fastener for TK326

Holding device for fixing the scanner TK326 to charging station/electricity meter, length of Velcro 2 m.
The magnetic holder 101610100 for TK326 is required for this.

Ord.No. **101609900**



Magnetic holder for TK326

for use with clampable probe holder with Velcro fastener 101609900.

Ord.No. **101610100**



Extension cable for scanning head input (SC)
to ZERA test set with RJ10 socket Length 20 m
on cable drum. Optional cable lengths on request.

Ord.No. **101168500**

Transport (see also Special Accessories)



Suitcase for separate accessories

Ord.No. **101416810**



Suitcase for separate accessories
incl. suitcase lid organizer

Ord.No. **101492900**

Standard Accessories (see also Special Accessories)



Microsoft SurfacePro4 Notebook
for software-guided testing.
A license for *WinSAM-V7-Lizenz* is required.

Ord.No. **101488000**



Grey protection shell
for Microsoft Surface Pro4 Tablet 12"

Ord.No. **101488200**



Electric van heater 3 kW as optional load
for the use of the test case *EMOB32*
3 heaters are required for a 3 phase load

Ord.No. **101489000**



Connection cable for EMOB32
for connection of max. 3 electric van heater
and test case 2.5 m, plug type 2

Ord.No. **101482700**



Connection cable for external loads
for connection of test case and load 0,3 m,
Plug type 2 to 32A CEE coupling.

Ord.No. **101594000**



Connection cable for EMOB200
to connect electric vehicle with test case.

Ord.No. **101561750**

Documentation



Documentation EMOB32, German

Ord.No. **101335580**



Complete documentation as pdf files on USB Stick

Ord.No. **100090716**

Special Accessories



AC charging cable, 3-phase, grey-black, 5 m
for connecting test case with electric vehicle

Ord.No. **101482200**

ZERA GmbH
Humboldtstrasse 2a
D-53639 Koenigswinter
Phone: +49 (0)2244 9277-0
E-Mail: zera@zera.de
Internet: www.zera.de
Managing Director: Horst Wächter
Headquarter: Königswinter

Commerzbank Bonn
IBAN: DE29 3804 0007 0113 3131 00
SWIFT (BIC): COBADEFF380

Kreissparkasse Köln
IBAN: DE15 3705 0299 0001 0784 92
SWIFT (BIC): COKSDE33

HRB 7073 Siegburg
VAT-IdNo. DE 218 515 479
WEEE-Reg.Nr. DE 53879641

Notes on using the product catalogue

When ordering, always state the order number.

Pictures can differ from original product.

We follow ZVEI terms of delivery, see on www.zera.de