



ZERA

EMOBxxx Product Catalogue

Doc.No: 100352733
Version from: 01.01.2024

Device



EMOB32 test case inclusive MT310s2 for on-site-testing of AC charging stations

Inclusive adjustment and factory calibration
for one mains frequency.

Ord.No. **1016742xx**

Calibration	Ord.No.
Factory 50 Hz	xx → 00
Factory 60 Hz	xx → 01
DAkKS 50 Hz	xx → 02
DAkKS 60 Hz	xx → 03

The EMOB32 is a portable and compact test case for on-site testing of three-phase AC charging stations for electric vehicles.

To carry out tests, a MT310s2 reference meter is integrated into the EMOB test case.

The MT310s2 can easily be removed to be used for other meter testing or measuring tasks.

With the battery-powered MT310s2, the test case does not require an additional power supply on site.

The test case has the following connection sockets:

- Type 2 (for charging station)
- Type 2 (for the electric car)

Connection cables must be ordered separately.

Configuration:

- Direct measurement up to 300 V/ 32 A (AC)
- Accuracy for power/energy measurement: < ±0,1 %
- Protection class **CAT II**
- Energy measurement during the charging procedure
- No mains supply required
- Software-guided test via separate Notepad or Notebook possible



EMOB32 test case for on-site-testing of AC charging stations

Inclusive adjustment and factory calibration for one mains frequency.

Ord.No. **1016741xx**

Calibration	Ord.No.
Factory 50 Hz	xx → 00
Factory 60 Hz	xx → 01
DAkKS 50 Hz	xx → 02
DAkKS 60 Hz	xx → 03

Customer reference meter MT3x0s2 used for calibration.

The EMOB32 is a portable and compact test case for on-site testing of three-phase AC charging stations for electric vehicles.

For carrying out tests, an additional MT310s2 reference meter is required which is simply integrated into the EMOB test case.

With the battery-powered MT310s2, the test case does not require an additional power supply on site.

The test case has the following connection sockets:

- Type 2 (for charging station)
- Type 2 (for the electric car)

Connection cables must be ordered separately.

Configuration:

- Direct measurement up to 300 V/ 32 A (AC)*
- Accuracy for power/energy measurement: < ±0,1 % *
- Protection class **CAT II**
- Energy measurement during the charging procedure
- No mains supply required
- Software-guided test via separate Notepad or Notebook possible

* with MT320s2 reference meter



EMOB80 test case inclusive MT310s2 for on-site-testing of AC charging stations

Inclusive adjustment and factory calibration
for one mains frequency.

Ord.No. **1016744xx**

Calibration	Ord.No.
Factory 50 Hz	xx → 00
Factory 60 Hz	xx → 01
DAkKS 50 Hz	xx → 02
DAkKS 60 Hz	xx → 03

The EMOB80 is a portable and compact test case for on-site testing of single-phase AC charging stations for electric vehicles.

To carry out tests, a MT310s2 reference meter is integrated into the EMOB test case.

The MT310s2 can easily be removed to be used for other meter testing or measuring tasks.

With the battery-powered MT310s2, the test case does not require an additional power supply on site.

The test case has the following connection sockets:

- Type 1 (for charging station)
- Socket for plug connector (for the electric car)

Connection cables must be ordered separately.

Configuration:

- Direct measurement
up to 300 V/ 80 A (AC)
- Accuracy for power/energy measurement:
< ±0,1 % (AC)
- Protection class **CAT II**
- Energy measurement during the charging procedure
- No mains supply required
- Software-guided test via separate Notepad or Notebook possible



EMOB80 test case for on-site-testing of AC charging stations

Inclusive adjustment and factory calibration for one mains frequency.

Ord.No. **1016743xx**

Calibration	Ord.No.
Factory 50 Hz	xx → 00
Factory 60 Hz	xx → 01
DAkKS 50 Hz	xx → 02
DAkKS 60 Hz	xx → 03

Customer reference meter MT3x0s2 used for calibration.

The EMOB80 is a portable and compact test case for on-site testing of single-phase AC charging stations for electric vehicles.

For carrying out tests, an additional MT310s2 reference meter is required which is simply integrated into the EMOB test case.

With the battery-powered MT310s2, the test case does not require an additional power supply on site.

The test case has the following connection sockets:

- Type 1 (for charging station)
- Socket for plug connector (for the electric car)

Connection cables must be ordered separately.

Configuration:

- Direct measurement up to 300 V/ 80 A (AC) *
- Accuracy for power/energy measurement: < ±0,1 % (AC) *
- Protection class **CAT II**
- Energy measurement during the charging procedure
- No mains supply required
- Software-guided test via separate Notepad or Notebook possible

* with MT310s2 reference meter



**EMOB200-00 test case inclusive MT310s2
for on-site-testing of DC- and AC charging stations**
Inclusive adjustment and factory calibration
for one mains frequency.

Ord.No. **1016746xx**

Calibration	Ord.No.
Factory 50 Hz & DC	xx → 00
Factory 60 Hz & DC	xx → 01
DAkKS 50 Hz & DC	xx → 02
DAkKS 60 Hz & DC	xx → 03

The EMOB200-00 is a portable and compact test case for on-site testing of DC and three-phase AC charging stations for electric vehicles.

To carry out tests, a MT310s2 reference meter is integrated into the EMOB test case.

The MT310s2 can easily be removed to be used for other meter testing or measuring tasks.

With the battery-powered MT310s2, the test case does not require an additional power supply on site.

The test case has the following connection sockets:

- Type 2 (for charging station)
- Type CCS2 (for charging station)
- Socket for Type 2 connector (for the electric car AC)
- Socket for plug connector (for the electric car DC)

Connection cables must be ordered separately.

Configuration:

- Direct measurement
up to 300 V/ 80 A (AC)
up to 1000 V/ 200 A (DC)
- Accuracy for power/energy measurement:
< ±0,1 % (AC)
< ±0,1 % (DC)
- Protection class **CAT II**
- Energy measurement during the charging procedure
- No mains supply required
- Software-guided test via separate Notepad or Notebook possible



EMOB200-00 test case for on-site-testing of DC and AC charging stations

Inclusive adjustment and factory calibration for one mains frequency.

Ord.No. **1016745xx**

Calibration	Ord.No.
Factory 50 Hz & DC	xx → 00
Factory 60 Hz & DC	xx → 01
DAkKS 50 Hz & DC	xx → 02
DAkKS 60 Hz & DC	xx → 03

Customer reference meter MT3x0s2 used for calibration.

The EMOB200-00 is a portable and compact test case for on-site testing of DC and three-phase AC charging stations for electric vehicles.

For carrying out tests, an additional MT310s2 reference meter is required which is simply integrated into the EMOB test case.

With the battery-powered MT310s2, the test case does not require an additional power supply on site.

The test case has the following connection sockets:

- Type 2 (for charging station)
- Type CCS2 (for charging station)
- Socket for plug connector (for the electric car)

Connection cables must be ordered separately.

Configuration:

- Direct measurement
up to 300 V/ 80 A (AC) *
- up to 1000 V/ 200 A (DC) *
- Accuracy for power/energy measurement:
< ±0,1 % (AC) *
- < ±0,1 % (DC) *
- Protection class **CAT II**
- Energy measurement during the charging procedure
- No mains supply required
- Software-guided test via separate Notepad or Notebook possible

* with MT310s2 reference meter



**EMOB200-10 test case inclusive MT310s2
for on-site-testing of DC- and AC charging stations**
Inclusive adjustment and factory calibration
for one mains frequency.

Ord.No. **1016748xx**

Calibration	Ord.No.
Factory 50 Hz & DC	xx → 00
Factory 60 Hz & DC	xx → 01
DAkKS 50 Hz & DC	xx → 02
DAkKS 60 Hz & DC	xx → 03

The EMOB200-10 is a portable and compact test case for on-site testing of DC and single-phase AC charging stations for electric vehicles.

To carry out tests, a MT310s2 reference meter is integrated into the EMOB test case.

The MT310s2 can easily be removed to be used for other meter testing or measuring tasks.

With the battery-powered MT310s2, the test case does not require an additional power supply on site.

The test case has the following connection sockets:

- Type 1 (for charging station)
- Type CCS1 (for charging station)
- Socket for plug connector (for the electric car AC)
- Socket for plug connector (for the electric car DC)

Connection cables must be ordered separately.

Configuration:

- Direct measurement
up to 300 V/ 80 A (AC)
up to 1000 V/ 200 A (DC)
- Accuracy for power/energy measurement:
< ±0,1 % (AC)
< ±0,1 % (DC)
- Protection class **CAT II**
- Energy measurement during the charging procedure
- No mains supply required
- Software-guided test via separate Notepad or Notebook possible



EMOB200-10 test case for on-site-testing of DC and AC charging stations

Inclusive adjustment and factory calibration for one mains frequency.

Ord.No. **1016747xx**

Calibration	Ord.No.
Factory 50 Hz & DC	xx → 00
Factory 60 Hz & DC	xx → 01
DAkKS 50 Hz & DC	xx → 02
DAkKS 60 Hz & DC	xx → 03

Customer reference meter MT3x0s2 used for calibration.

The EMOB200-10 is a portable and compact test case for on-site testing of DC and single-phase AC charging stations for electric vehicles.

For carrying out tests, an additional MT310s2 reference meter is required which is simply integrated into the EMOB test case.

With the battery-powered MT310s2, the test case does not require an additional power supply on site.

The test case has the following connection sockets:

- Type 1 (for charging station)
- Type CCS1 (for charging station)
- Socket for Typ 1 connector (for the electric car AC)
- Socket for plug connector (for the electric car DC)

Connection cables must be ordered separately.

Configuration:

- Direct measurement
up to 300 V/ 80 A (AC) *
up to 1000 V/ 200 A (DC) *
- Accuracy for power/energy measurement:
< ±0,1 % (AC) *
< ±0,1 % (DC) *
- Protection class **CAT II**
- Energy measurement during the charging procedure
- No mains supply required
- Software-guided test via separate Notepad or Notebook possible

* with MT310s2 reference meter



EMOB500-00 test case inclusive MT310s2 for on-site-testing of DC charging stations

Inclusive adjustment and factory calibration for one mains frequency.

Ord.No. **1016749xx**

Calibration	Ord.No.
Factory DC	xx → 00
DAkkS DC	xx → 01

The EMOB500-00 is a portable and compact test case for on-site testing of DC charging stations for electric vehicles.

To carry out tests, a MT310s2 reference meter is integrated into the EMOB test case.

The MT310s2 can easily be removed to be used for other meter testing or measuring tasks.

With the battery-powered MT310s2, the test case does not require an additional power supply on site.

The test case has the following connection sockets:

- Type CCS2 (for charging station)

The connection cable for the electric car is fixed at the test case. Plug type CCS2

Configuration:

- Direct measurement up to 1000 V/ 500 A (DC)
- Accuracy for power/energy measurement:
< ±0,1 % (DC)
- Protection class **CAT I**
- Energy measurement during the charging procedure
- No mains supply required
- Software-guided test via separate Notepad or Notebook possible



EMOB500-00 test case for on-site-testing of DC charging stations

Inclusive adjustment and factory calibration for one mains frequency.

Ord.No. **1016684xx**

Calibration	Ord.No.
Factory DC	xx → 00
DAkkS DC	xx → 01

Customer reference meter MT3x0s2 used for calibration.

The EMOB500-00 is a portable and compact test case for on-site testing of DC charging stations for electric vehicles.

For carrying out tests, an additional MT310s2 reference meter is required which is simply integrated into the EMOB test case.

With the battery-powered MT310s2, the test case does not require an additional power supply on site.

The test case has the following connection sockets:

- Type CCS2 (for charging station)

The connection cable for the electric car is fixed at the test case. Plug type CCS2

Configuration:

- Direct measurement up to 1000 V/ 500 A (DC) *
- Accuracy for power/energy measurement:
< ±0,1 % (DC) *
- Protection class **CAT I**
- Energy measurement during the charging procedure
- No mains supply required
- Software-guided test via separate Notepad or Notebook possible

* with MT310s2 reference meter

Power Cords



Power cord "Plug type A to figure-of-eight", 2.0 m

For supply via mains supply.

- 1x Plug type A
- 1x Figure-of-eight socket (IEC 60320-1 C7)

Ord.No. **100277201**



Power cord "Euro plug type C to figure-of-eight", 2.0 m

For supply via mains supply.

- 1x Euro plug type C (CEE 7/16)
- 1x Figure-of-eight socket (IEC 60320-1 C7)

Ord.No. **100067700**



Power cord "Plug type G to figure-of-eight", 2.0 m

For supply via mains supply.

- 1x Plug type G (BS1363)
- 1x Figure-of-eight socket (IEC 60320-1 C7)

Ord.No. **100277200**



Power cord "Plug type I to figure-of-eight", 2.0 m

For supply via mains supply.

- 1x Plug type I (AS/NZS 3112, 2-pin)
- 1x Figure-of-eight socket (IEC 60320-1 C7)

Ord.No. **100277202**

Battery Pack and Accessories



Battery Pack BM4100

Rechargeable Battery Pack with Li-ION Battery for operation of MT3x0s2 independent from the mains.
14,4 V / 6,6 Ah / 95,04 Wh

Ord.No. **101378200**



DC/DC-Converter for Battery Pack BM4100

Converter for recharging battery pack BM4100 via cigarette lighter plug from cars.

Input: DC 12 -16 V

Output: DC 24 V, max. 6 A

Ord.No. **101486001**

**AC Power supply for Battery Pack BM4100**

AC Power supply for charging BM4100 battery pack

Input: AC 90 – 264 V / 47 – 63 Hz

The following mains adapters are included:

Plug type C (EU) – Plug type G (UK)

Plug type A (US) – Plug type I (AUS)

Output: DC 24 V, 1,67 A (max. 40 W)

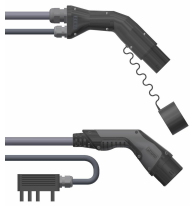
Ord.No. **101644310**

**Extension for DC cable**

for connection with the battery module
BM4100 of the *MT310s2* Reference Meter

Ord.No. **101488900**

Current and Voltage Cables (see also Special Accessories)

**Connection cable for EMOB32 / EMOB200-00**

for connecting public AC charging stations (without connection cable) with the test case; length app. 5 m; with fused sense line; AC max. 32 A; cable

Plug type 2 ↔ Plug type 2

Ord.No. **101626500**

Software

**WinSAM-EMOB Software**

The WinSAM-EMOB software is used for user-guided testing of charging stations with an EMOB test case. The software will be installed and configured on an external Computer/Laptop (PC).

The software package contains a USB memory stick with the installation program, communication scripts and special test sequences for testing charging stations.

The installation and configuration of the WinSAM software on the customer's PC can be carried out either at ZERA or remotely via an Internet remote session. A customer PC with administrator rights and a stable Internet connection are mandatory.

Ord.No. **101549400**



Installation and Configuration

Installation and configuration of WinSAM software on customer PC, if required.

Only valid with a bundle purchase of the MT3703 WinSAM or WinSAM-EMOB software.

Max. duration of the Internet remote session approx. 4 hours.

Ord.No. **100005646**

Impulse Sensor (see also Special Accessories)



TK326, scanning head without holding device

For detection of rotor disc markings on Ferraris meters and LED signals on electronic meters.

- Fixing: Via stretchable holding device for scanning heads TK326/TK118.

Ord.No. **101064901**



Holding device for scanning head TK326/ TK118

Stretchable holding device to fix the scanning head TK326 or TK118 at the electricity meter.

- Maximum wingspan: 19.0 cm.

Ord.No. **100319600**



K121, S0 pulse converter with measuring leads

For pulse detection of floating contacts as well as of S0 pulse output on electricity meters. Including two laboratory cables with safety plug/connection pin.

Ord.No. **100004210**



Connection cable for RJ10 socket input (SC)

The spiral cable for connecting of TKxxx or K121 to the ZERA instrument.

- 2x Modular connector RJ10
- Length: 1.00 m / expanded: 6.00 m

Ord.No. **Z10353027**

**Microphone stand**

for mounting and free positioning of the TK118/TK326 optical pickup.

The stand clamp 101558300 is required for this purpose.

Ord.No. **101558200**

**Tripod clamp for tripod 101558200**

for mounting the TK118/TK326 optical pickup.

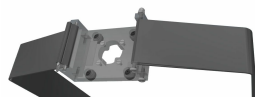
Ord.No. **101558300**

**Nylon bag for Microphone stand**

Nylon bag for protection and better transportation of the microphone stand.

Dimensions: 1000x130x130 mm, colour black.

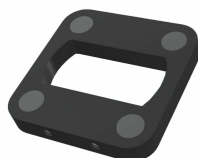
Ord.No. **101609100**

**Tensionable probe holder with Velcro fastener for TK326**

Holding device for fixing the scanner TK326 to charging station/electricity meter, length of Velcro 2 m.

The magnetic holder 101610100 for TK326 is required for this.

Ord.No. **101609900**

**Magnetic holder for TK326**

for use with clampable probe holder with Velcro fastener 101609900.

Ord.No. **101610100**



Extension cable for scanning head input (SC)
to ZERA test set with RJ10 socket Length 20 m
on cable drum. Optional cable lengths on request.

Ord.No. **101168500**

Transport (see also Special Accessories)



Suitcase for separate accessories
Overall dimensions:
54,6 cm x 34,7 cm x 19,7 cm (H x W x D)

Ord.No. **101416810**

*Please clarify whether the case size is suitable
for the ordered accessories.*



Suitcase for separate accessories
incl. suitcase lid organizer
Overall dimensions:
51,5 cm x 41,5 cm x 20,0 cm (H x W x D)

Ord.No. **101492900**

*Please clarify whether the case size is suitable
for the ordered accessories.*

Standard Accessories (see also Special Accessories)



DELL, 2- in 1- Laptop, Inspiron 14"
for user-guided testing of charging stations.
For this purpose the latest WinSAM-EMOB software,
special test sequences and communication scripts must
be installed on the PC must be installed (optional).

Ord.No. **101630000**

Documentation



Complete Documentation
as pdf files on USB flash drive

Ord.No. **100090716**

Special Accessories



Connection cable for EMOB32 / EMOB200-00

for connecting test cases with max. 3 x loads
(e.g. AC electric fan heater); length approx. 2.5 ;
3 x AC 1-phase max. 16 A

Plug type 2 ↔ 3 x earthed sockets (CEE 7/3)

Ord.No.

101482700



Electric van heater 3 kW as optional load

for the use of the test case *EMOB32*

3 heaters are required for a 3 phase load

Ord.No.

101489000



Connection cable für EMOB32 / EMOB200-00

for connecting test cases to any load;
length approx. 0.3 m; AC 3-phase max. 32 A,

Plug type 2 ↔ 32A CEE coupling

Ord.No.

101594000



Connection cable for EMOB32 / Emob200-00

for connecting the AC-load (electric car) to the
test case; length 5 m; AC 3-phase max. 32 A

Plug type 2 ↔ Plug type 2

Ord.No.

101482200



Connection cable for EMOB80 / EMOB200-10

for connecting the AC-load (electric car) to the
test case; length 1,5 m; with temperature monitoring;
AC 1-phase max. 80 A;

Plug type 1 ↔ Plug connector (for test case)

Ord.No.

101606600

**Connection cable for EMOB200-00**

for connecting AC or DC load (electric car) to the test case; length 1,5m, with temperature monitoring;
DC max. 200 A; AC 3-phase max 32 A;

Plug Type CCS2 ↔ Plug connector (for test case)

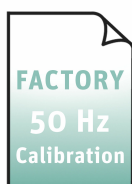
Ord.No. **101561750**

**Connection cable for EMOB200-10**

for connecting AC or DC load (electric car) to the test case; length 1,5m, with temperature monitoring;
DC max. 200 A; AC 1-phase max 80 A;

Plug Type CCS1 ↔ CombiTac (for test case)

Ord.No. **101630800**

Calibration (for Service)**Factory Calibration for EMOB32,
AC 50 Hz in combination with MT310s2**

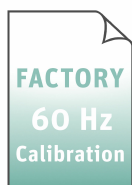
incl. ZERA calibration report

Ord.No. **101242335**

Load points according to ZERA regulations.

Summary of used load points
can be downloaded at www.zera.de.

Additional load points are subject to charges.

**Factory Calibration for EMOB32,
AC 60 Hz in combination with MT310s2**

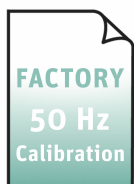
incl. ZERA calibration report

Ord.No. **101242350**

Load points according to ZERA regulations.

Summary of used load points
can be downloaded at www.zera.de.

Additional load points are subject to charges.

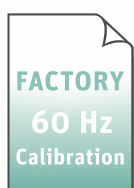


**Factory Calibration for EMOB80,
AC 50 Hz in combination with MT310s2**
incl. ZERA calibration report

Ord.No. **101242346**

Load points according to ZERA regulations.
Summary of used load points
can be downloaded at www.zera.de.

Additional load points are subject to charges.



**Factory Calibration for EMOB80,
AC 60 Hz in combination with MT310s2**
incl. ZERA calibration report

Ord.No. **101242348**

Load points according to ZERA regulations.
Summary of used load points
can be downloaded at www.zera.de.

Additional load points are subject to charges.

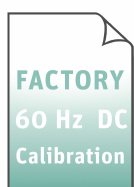


**Factory Calibration for EMOB200-00,
AC 50 Hz and DC in combination with MT310s2**
incl. ZERA calibration report.

Ord.No. **101242352**

Load points according to ZERA regulations.
Summary of used load points
can be downloaded at www.zera.de.

Additional load points are subject to charges.

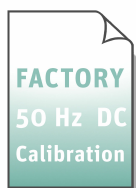


**Factory Calibration for EMOB200-00,
AC 60 Hz and DC in combination with MT310s2**
incl. ZERA calibration report.

Ord.No. **101242364**

Load points according to ZERA regulations.
Summary of used load points
can be downloaded at www.zera.de.

Additional load points are subject to charges.

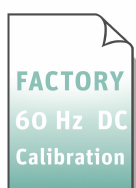


**Factory Calibration for EMOB200-10,
AC 50 Hz and DC in combination with MT310s2**
incl. ZERA calibration report.

Ord.No. **101242365**

Load points according to ZERA regulations.
Summary of used load points
can be downloaded at www.zera.de.

Additional load points are subject to charges.



**Factory Calibration for EMOB200-10,
AC 60 Hz and DC in combination with MT310s2**
incl. ZERA calibration report.

Ord.No. **101242366**

Load points according to ZERA regulations.
Summary of used load points
can be downloaded at www.zera.de.

Additional load points are subject to charges.



**Factory Calibration for EMOB500-00,
DC in combination with MT310s2**
incl. ZERA calibration report.

Ord.No. **101242354**

Load points according to ZERA regulations.
Summary of used load points
can be downloaded at www.zera.de.

Additional load points are subject to charges.



**DAkkS DKD-Calibration for EMOB32,
AC 50 Hz in combination with MT310s2**
incl. DKD-Calibration Certificate acc. IEC 17025

Ord.No. **101173962**

Load points according to ZERA regulations.
Summary of used load points
can be downloaded at www.zera.de.

Additional load points are subject to charges.



**DAkKS DKD-Calibration for EMOB32,
AC 60 Hz in combination with MT310s2**
incl. DKD-Calibration Certificate acc. IEC 17025

Ord.No. **101173967**

Load points according to ZERA regulations.
Summary of used load points
can be downloaded at www.zera.de.

Additional load points are subject to charges.



**DAkKS DKD-Calibration for EMOB80,
AC 50 Hz in combination with MT310s2**
incl. DKD-Calibration Certificate acc. IEC 17025

Ord.No. **101173968**

Load points according to ZERA regulations.
Summary of used load points
can be downloaded at www.zera.de.

Additional load points are subject to charges.



**DAkKS DKD-Calibration for EMOB80,
AC 60 Hz in combination with MT310s2**
incl. DKD-Calibration Certificate acc. IEC 17025

Ord.No. **101173969**

Load points according to ZERA regulations.
Summary of used load points
can be downloaded at www.zera.de.

Additional load points are subject to charges.



**DAkKS DKD-Calibration for EMOB200-00,
AC 50 Hz and DC in combination with MT310s2**
incl. DKD-Calibration Certificate acc. IEC 17025

Ord.No. **101173970**

Load points according to ZERA regulations.
Summary of used load points
can be downloaded at www.zera.de.

Additional load points are subject to charges.



**DAkKS DKD-Calibration for EMOB200-00,
AC 60 Hz and DC in combination with MT310s2**
incl. DKD-Calibration Certificate acc. IEC 17025

Ord.No. **101173979**

Load points according to ZERA regulations.
Summary of used load points
can be downloaded at www.zera.de.

Additional load points are subject to charges.



**DAkKS DKD-Calibration for EMOB200-10,
AC 50 Hz and DC in combination with MT310s2**
incl. DKD-Calibration Certificate acc. IEC 17025

Ord.No. **101173980**

Load points according to ZERA regulations.
Summary of used load points
can be downloaded at www.zera.de.

Additional load points are subject to charges.



**DAkKS DKD-Calibration for EMOB200-10,
AC 60 Hz and DC in combination with MT310s2**
incl. DKD-Calibration Certificate acc. IEC 17025

Ord.No. **101173981**

Load points according to ZERA regulations.
Summary of used load points
can be downloaded at www.zera.de.

Additional load points are subject to charges.



**DAkKS DKD-Calibration for EMOB500-00
DC in combination with MT310s2**
incl. DKD-Calibration Certificate acc. IEC 17025

Ord.No. **101173972**

Load points according to ZERA regulations.
Summary of used load points
can be downloaded at www.zera.de.

Additional load points are subject to charges.

ZERA GmbH
Humboldtstrasse 2a
D-53639 Koenigswinter
Phone: +49 (0)2244 9277-0
E-Mail: zera@zera.de
Internet: www.zera.de
Managing Director: Horst Wächter
Headquarter: Königswinter

Commerzbank Bonn
IBAN: DE29 3804 0007 0113 3131 00
SWIFT (BIC): COBADEFF380

Kreissparkasse Köln
IBAN: DE15 3705 0299 0001 0784 92
SWIFT (BIC): COKSDE33

HRB 7073 Siegburg
VAT-IdNo. DE 218 515 479
WEEE-Reg.Nr. DE 53879641

Notes on using the product catalogue

When ordering, always state the order number.

Pictures can differ from original product.

We follow ZVEI terms of delivery, see on www.zera.de