



---

**ZERA**

# **ESxBx00**

## **Product Catalogue**

Doc.No: 100352723  
Version from: 01.01.2024

---

---

Device



**ESCB200 Electronic Compensated Standard Current Burden**

Inclusive adjustment and factory calibration.

Ord.No. 1016730xx

Calibration	Ord. No.
Factory 50/60 Hz / ANSI	xx → 04
DAkKS 50 Hz	xx → 02
DAkKS 60 Hz	xx → 03

The programmable electronic compensated standard current burden ESCB can be used as load for manual and automatic tests of current instrument transformers. The ESCB is characterized particularly by the user-friendly menu guidance using function keys and 6,4" LCD display.



**ESVB200 Electronic Compensated Standard Voltage Burden**

Inclusive adjustment and factory calibration.

Ord.No. 1016728xx

Calibration	Ord. No.
Factory 50/60 Hz / ANSI	xx → 04
DAkKS 50 Hz	xx → 02
DAkKS 60 Hz	xx → 03

The programmable electronic compensated standard voltage burden ESVB can be used as load for manual and automatic tests of voltage instrument transformers. The ESVB is characterized particularly by the user-friendly menu guidance using function keys and 6,4" LCD display.



**ESCB100 Electronic Compensated Standard Current Burden**

Inclusive adjustment and factory calibration for one mains frequency.

Ord.No. 1016731xx

Calibration	Ord.No.
Factory 50 Hz	xx → 00
Factory 60 Hz	xx → 01
DAkKS 50 Hz	xx → 02
DAkKS 60 Hz	xx → 03

The burdens ESCB100 is used for manual testing of instrument transformers acc. to IEC or ANSI/IEEE at fixed 3 secondary current ranges 1 A, 2 A and 5 A with **fixed burden steps at 50 Hz or 60 Hz** as load.



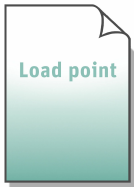
**ESVB100 Electronic Compensated Standard Voltage Burden**

Inclusive adjustment and factory calibration for one mains frequency.

Ord.No. 1016729xx

Calibration	Ord.No.
Factory 50 Hz	xx → 00
Factory 60 Hz	xx → 01
DAkKS 50 Hz	xx → 02
DAkKS 60 Hz	xx → 03

The burdens ESVB100 is used for manual testing of instrument transformers acc. to IEC or ANSI/IEEE at 6 fixed secondary voltage ranges (to be defined) with **fixed burden steps at 50 Hz or 60 Hz** as load.



**Secondary Voltage Range for ESVB100**

A total of **6** voltage **ranges** can be selected.

**00**=100 V, **01**=110 V, **02**=115 V, **03**=120 V,  
**04**=190 V, **05**=200 V, **06**=230 V,  
**07**=100/3 V, **08**=110/3 V, **09**=115/3 V, **10**=120/3 V,  
**11**=190/3 V, **12**=200/3 V, **13**=230/3  
**14**=100/√3 V, **15**=110/√3 V, **16**=115/√3 V, **17**=120/√3 V,  
**18**=190/√3 V, **19**=200/√3 V, **20**=230/√3 V

Ord.No. 1013166xx

xx please select the voltage range

## Power Cords



### Power cord "Class I grounded plug type E/F to IEC 60320 C13", 2.5 m

For supply via power socket.

- 1x class I grounded plug type E/F (CEE 7/7)
- 1x socket IEC 60320 C13, angled

Ord.No.

**M00481004**

### Power cord "Plug type B to IEC 60320 C13", 2.5 m

For supply via power socket.

- 1x plug type B
- 1x socket IEC 60320 C13

Ord.No.

**X00006459**

### Power cord "Plug type I to IEC 60320 C13", 2.5 m

For supply via power socket.

- 1x plug type I (AS/NZS 3112, 3-pin)
- 1x socket IEC 60320 C13

Ord.No.

**X00006460**

### Power cord "Plug type G (BS 1363) to IEC 60320 C13", 2.5 m

For supply via power socket.

- 1x Plug type G (BS 1363)
- 1x socket IEC 60320 C13

Ord.No.

**X00009832**

### Power cord "Plug type H" to IEC 60320 C13", 1.8 m

For supply via power socket.

- 1x Plug type H
- 1x socket IEC 60320 C13

Ord.No.

**100929903**

Standard Accessories (see also Special Accessories)



**Set - Fuse 1,6 A / time-lag Type**  
10 pcs.

Ord.No. 101393500



**Set - Fuse 3,15 A /semi time-lag Type**  
10 pcs.

Ord.No. 101393600



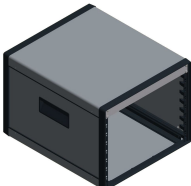
**High voltage protection box HVP100 for ESVBx00**  
To avoid damages due to overvoltages.  
Please see datasheet HVP100\_MAN\_EXT\_EN\_V100.pdf  
for more information.

Ord.No. 101304900



**Desktop case for ESVB100/200**  
Desktop case for ESVB100 or ESVB200, rear side open

Ord.No. 101435500



**Desktop case for ESCB100/200**  
Desktop case for ESCB100 or ESCB200, rear side open

Ord.No. 101435600

## Documentation



**Complete Documentation**  
as pdf files on USB flash drive

Ord.No. **100090716**

## Readjustment (for Service)



**Adjustment of ESCBx00**

*Note:* Calibration and Calibration report  
are not included.

Ord.No. **100033880**



**Adjustment of ESVBx00**

*Note:* Calibration and Calibration report  
are not included.

Ord.No. **100033881**

## Calibration (for Service)



**Factory calibration for ESCB200,  
50 Hz / 60 Hz / ANSI**  
incl. ZERA calibration report.

Ord.No. **100890825**

**Load points according to ZERA regulations.**  
Summary of used load points  
can be downloaded at [www.zera.de](http://www.zera.de).

Additional load points are subject to charges.



**DAkkS Calibration for ESCB200, 50 Hz**  
incl. DKD Calibration Certificate

Ord.No. **100006880**

**Load points according to ZERA regulations.**  
Summary of used load points  
can be downloaded at [www.zera.de](http://www.zera.de).

Additional load points are subject to charges.

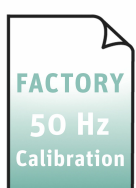


**DAKKS Calibration for ESCB200, 60Hz**  
incl. DKD Calibration Certificate

Ord.No. **100006889**

**Load points according to ZERA regulations.**  
Summary of used load points  
can be downloaded at [www.zera.de](http://www.zera.de).

Additional load points are subject to charges.

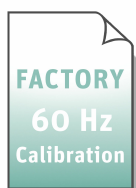


**Factory calibration for ESCB100, 50 Hz**  
incl. ZERA calibration report

Ord.No. **101242316**

**Load points according to ZERA regulations.**  
Summary of used load points  
can be downloaded at [www.zera.de](http://www.zera.de).

Additional load points are subject to charges.



**Factory calibration for ESCB100, 60 Hz**  
incl. ZERA calibration report

Ord.No. **101242317**

**Load points according to ZERA regulations.**  
Summary of used load points  
can be downloaded at [www.zera.de](http://www.zera.de).

Additional load points are subject to charges.



**DAKKS Calibration for ESCB100, 50 Hz**  
incl. DKD calibration Certificate

Ord.No. **101173925**

**Load points according to ZERA regulations.**  
Summary of used load points  
can be downloaded at [www.zera.de](http://www.zera.de).

Additional load points are subject to charges.

**DAKKS Calibration for ESCB100, 60 Hz**  
incl. DKD calibration CertificateOrd.No. **101173926****Load points according to ZERA regulations.**  
Summary of used load points  
can be downloaded at [www.zera.de](http://www.zera.de).

Additional load points are subject to charges.

**Factory calibration for ESVB200,  
50 Hz / 60 Hz / ANSI**  
incl. ZERA calibration report.Ord.No. **100890826****Load points according to ZERA regulations.**  
Summary of used load points  
can be downloaded at [www.zera.de](http://www.zera.de).

Additional load points are subject to charges.

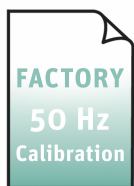
**DAKKS Calibration for ESVB200, 50 Hz**  
incl. DKD Calibration CertificateOrd.No. **100006881****Load points according to ZERA regulations.**  
Summary of used load points  
can be downloaded at [www.zera.de](http://www.zera.de).

Additional load points are subject to charges.

**DAKKS Calibration for ESVB200, 60Hz**  
incl. DKD Calibration CertificateOrd.No. **100006890****Load points according to ZERA regulations.**  
Summary of used load points  
can be downloaded at [www.zera.de](http://www.zera.de).

Additional load points are subject to charges.



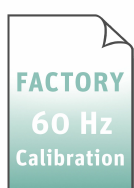


**Factory calibration for ESVB100, 50 Hz**  
incl. ZERA calibration report

Ord.No. **101242312**

**Load points according to ZERA regulations.**  
Summary of used load points  
can be downloaded at [www.zera.de](http://www.zera.de).

Additional load points are subject to charges.



**Factory calibration for ESVB100, 60 Hz**  
incl. ZERA calibration report

Ord.No. **101242313**

**Load points according to ZERA regulations.**  
Summary of used load points  
can be downloaded at [www.zera.de](http://www.zera.de).

Additional load points are subject to charges.



**DAkkS Calibration for ESVB100, 50 Hz**  
incl. DKD calibration Certificate

Ord.No. **101173923**

**Load points according to ZERA regulations.**  
Summary of used load points  
can be downloaded at [www.zera.de](http://www.zera.de).

Additional load points are subject to charges.



**DAkkS Calibration for ESVB100, 60 Hz**  
incl. DKD calibration Certificate

Ord.No. **101173924**

**Load points according to ZERA regulations.**  
Summary of used load points  
can be downloaded at [www.zera.de](http://www.zera.de).

Additional load points are subject to charges.

---

ZERA GmbH  
Humboldtstrasse 2a  
D-53639 Koenigswinter  
Phone: +49 (0)2244 9277-0  
E-Mail: [zera@zera.de](mailto:zera@zera.de)  
Internet: [www.zera.de](http://www.zera.de)  
Managing Director: Horst Wächter  
Headquarter: Königswinter

---

Commerzbank Bonn  
IBAN: DE29 3804 0007 0113 3131 00  
SWIFT (BIC): COBADEFF380

Kreissparkasse Köln  
IBAN: DE15 3705 0299 0001 0784 92  
SWIFT (BIC): COKSDE33

HRB 7073 Siegburg  
VAT-IdNo. DE 218 515 479  
WEEE-Reg.Nr. DE 53879641

---

## Notes on using the product catalogue

When ordering, always state the order number.

Pictures can differ from original product.

We follow ZVEI terms of delivery, see on [www.zera.de](http://www.zera.de)