

MTS310 — Special Edition

ZERA now offers a special edition of its approved Meter Test System Type MTS310. Additionally to the high accuracy and long term stability of the system it now covers further safety aspects and includes all new WinSAM features. The MTS310 Special Edition shows the complete range of available functionalities and fits for smart metering data communication.

State of the art technology in hard- and software

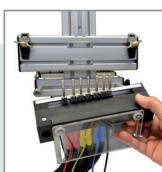


1

Moveable meter rack for CT operated meter or electricity meters up to 120 A.

2

Quick connecting devices can be modified for connecting high current connection up to 120 A.



3

ICT127 Isolated Current Transformer

4

Light barrier for safe operation

5

Integrated Source MTS310 for providing up to 10 test positions.

Recessed roller system for flexible placement of MTS.

WinSAM-Configuration / Version 6.0				
Activate the calculation of measurement uncertainty and define the rate of uncertainty				
Measurement uncertainty				
Rate of measurement uncertainty				
Range (up to A)	with ICT / w/o MSVT	with ICT / w/o MSVT	with ICT / w/o MSVT	with ICT / w/o MSVT
120.00	0.040	0.100	0.020	0.020
10.00	0.000	0.700	0.000	0.000
1.000	0.000	0.000	0.000	0.000

Stated measurement uncertainty in WinSAM

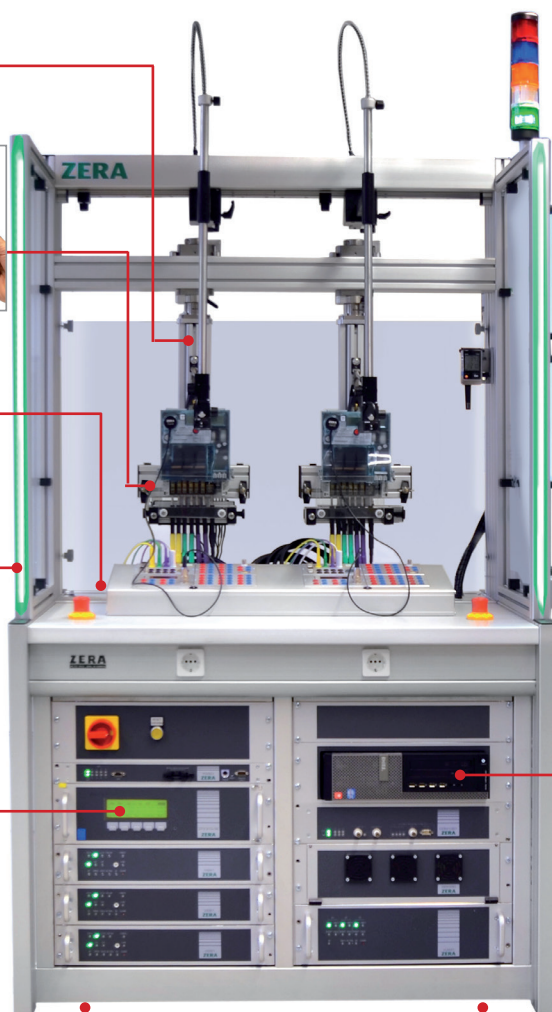
6

ET118 — Scanner for QR-codes, datamatrix codes...

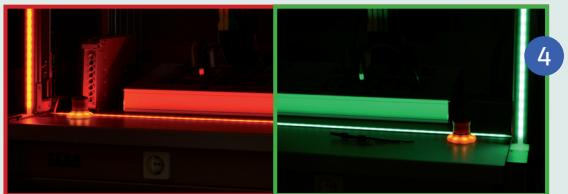
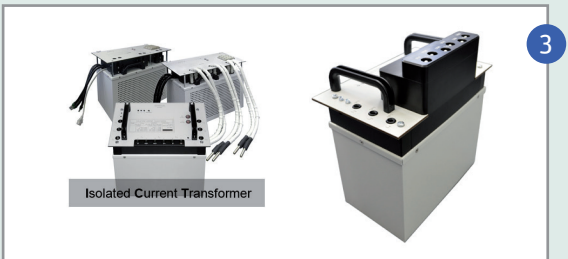
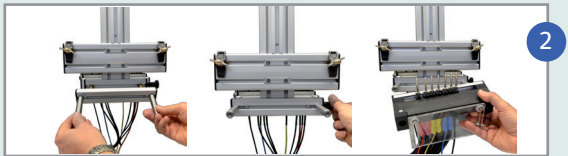
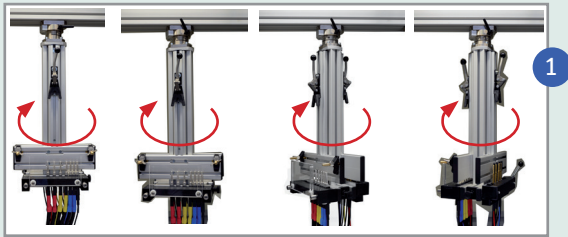
7

Side table for keypad

Integrated DELL-PC



Special Components in Details



Moveable Meter Rack

- Quick and safe positioning of the meter under test
- Available for single- or multiple-position test systems
- Equipped with quick connection devices for CT operated meters and e.g. 60 A meters

Quick Connecton Device

- Quick and easy modification from 60 A meter connection to 120 A meter connection
- Minimize preparation and connection time for meter testing
- Avoid incorrect meter connections which can lead to destruction of the meter under test or the measuring system.
- Continuous currents up to 120 A

ICT127 — Isolated Current Transformers

- Three-phase error-compensated isolated current transformer ICT127 to supply galvanic isolated test current to meters with closed link
- Integrated self-protection
- Communication via WinSAM
- Max. current range 120 A

Light Barriers for Safe Operation

- Indication of system status
- Barrier as additional emergency stopp element

Integrated MTS310

- Power source MTS310 integrated into a test bench
- New compact design which serves for testing of electricity meters up to 10 positions (max. 5 positions, if ICTs are used)

WinSAM Version 6

- Measurement uncertainty can be stated in the WinSAM report
- Easy controlling, testing and reporting of the complete system

Handheld terminal ET118

- Used for entry and transfer of meter specific data, e. g. serial no., owner no. or counter states to the WinSAM-Software
- Scanning of 2D codes, e. g. at highly complex DataMatrix meters
- Data transfer to PC via Bluetooth

